

Rapid Deployment BESS Solutions for Off-Grid Mining: Cutting LCOE & Meeting UL Standards

2025-02-04 11:05

The Real Cost of Powering Remote Mines: Why Your Diesel Generator is Holding You Back

Honestly, if I had a dollar for every time I've stood on a remote site, the hum of diesel generators drowning out everything else, and heard a site manager say, "Well, it's just how it's done," I'd have retired years ago. For decades, off-grid mining and industrial operations, from the outback of Australia to the mountains of Nevada, have been shackled to diesel. It's familiar, it's "reliable," but let's have a real, coffee-chat about what that reliability truly costs not just in fuel bills, but in operational flexibility, carbon liabilities, and sheer operational headache. I've seen this firsthand on site: the logistics chain for fuel, the noise, the emissions, and the vulnerability to fuel price spikes that can blow a quarterly budget apart.

Today, the conversation is shifting. It's not about if you should integrate solar and battery storage, but how fast and how smartly you can do it. The solution isn't a bespoke, decade-long engineering project. It's the rapid deployment of pre-engineered, containerized solar-generator hybrids that meet the brutal demands of mining while speaking the language of your CFO and risk manager: lower Levelized Cost of Energy (LCOE), ironclad safety, and future-proof compliance.

Quick Navigation

- [The Hidden Pain Points of Traditional Off-Grid Power](#)
- [When "Business as Usual" Becomes a Business Risk](#)
- [The Blueprint: Rapid-Deployment, Containerized Hybrid Systems](#)
- [From Blueprint to Reality: A North American Case Study](#)
- [The Engineer's Notebook: C-Rate, Thermal Management & Real-World LCOE](#)

The Hidden Pain Points of Traditional Off-Grid Power

The problem starts long before the generator is switched on. For a new mining claim or a temporary industrial site, the lead time to get reliable power can be months. You're dealing with custom civil works, complex electrical interconnection studies, and sourcing equipment from a dozen different vendors. The initial CapEx might look manageable, but that's a mirage. The real cost is in the ongoing OpEx and the massive operational inflexibility.

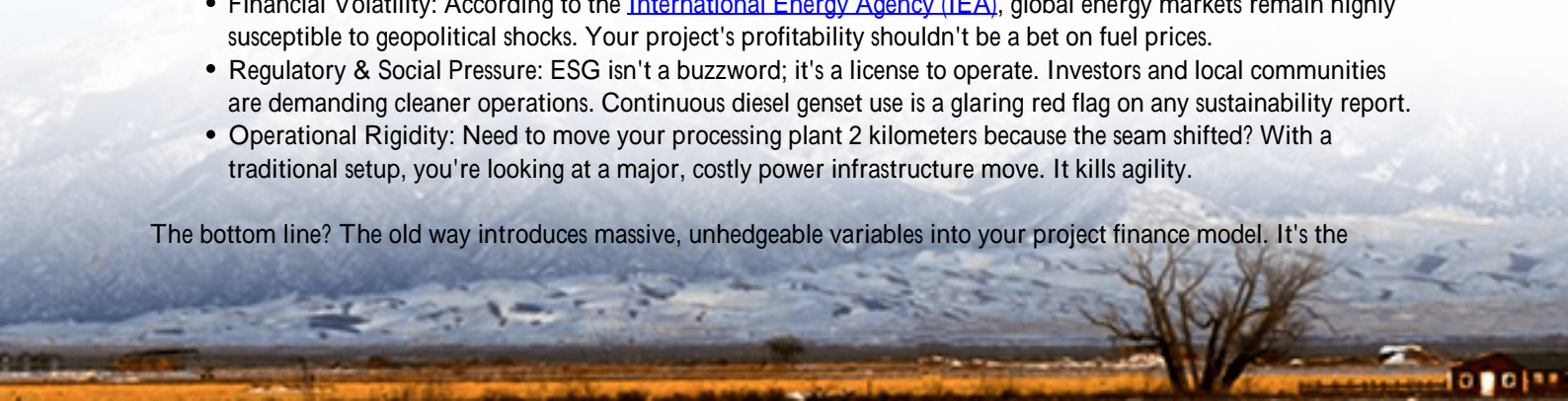
I remember a project in Northern Canada where the fuel supply line was a winter road, open for only six weeks a year. The entire year's fuel budget was hostage to a very short, very expensive logistical window. One warm winter and that road doesn't freeze properly? Catastrophe. This isn't an outlier; it's the stark reality for hundreds of operations. You're not just buying diesel; you're buying an entire fragile ecosystem of trucks, drivers, storage tanks, and environmental mitigation to go with it.

When "Business as Usual" Becomes a Business Risk

Let's agitate that pain a bit. That diesel dependency translates into three massive risks:

- **Financial Volatility:** According to the [International Energy Agency \(IEA\)](#), global energy markets remain highly susceptible to geopolitical shocks. Your project's profitability shouldn't be a bet on fuel prices.
- **Regulatory & Social Pressure:** ESG isn't a buzzword; it's a license to operate. Investors and local communities are demanding cleaner operations. Continuous diesel genset use is a glaring red flag on any sustainability report.
- **Operational Rigidity:** Need to move your processing plant 2 kilometers because the seam shifted? With a traditional setup, you're looking at a major, costly power infrastructure move. It kills agility.

The bottom line? The old way introduces massive, unhedgeable variables into your project finance model. It's the



opposite of de-risking.

The Blueprint: Rapid-Deployment, Containerized Hybrid Systems

So, what's the solution? It looks a lot like a shipping container, but it's the heart of a modern power plant. We're talking about pre-fabricated, plug-and-play systems that combine solar PV, a large-scale battery energy storage system (BESS), and intelligent power management in a single, rapidly deployable unit. This is the core of what we at Highjoule Technologies have refined for harsh environments.

The magic isn't just in putting components in a box. It's in the pre-engineering. Every Highjoule system designed for markets like the US or EU is built to the most rigorous local standards from the ground up: UL 9540 for the energy storage system, UL 1741 for inverters, and the full suite of IEC standards for safety and performance. This isn't an afterthought; it's baked into the design, so when it arrives on your site, your local AHJ (Authority Having Jurisdiction) has a clear, familiar framework to approve it. We've cut deployment timelines from 12-18 months down to as little as 90 days for a fully operational microgrid.

The financial model flips. Your high, variable OpEx (diesel) is replaced by high, predictable CapEx (the system) with near-zero marginal cost for the solar energy. Over a 10-year project life, the LCOE plummets. I've seen reductions of 40-60% compared to pure diesel gensets, and that's before accounting for carbon credits or avoided fuel logistics costs.

From Blueprint to Reality: A North American Case Study

Let's get concrete. A few years back, we worked with a mid-tier mining company on a new exploratory site in a remote part of the Mountain West, USA. The challenge: power a 2MW load for core sampling and camp facilities, with zero grid connection, in an environmentally sensitive area with strict noise and emission limits.



The traditional bid was for multiple large diesel generators and weekly fuel truck convoys. Our proposal: a 1.5MW solar array coupled with a 3MWh, containerized BESS and two smaller, high-efficiency diesel gensets as backup. The BESS does the heavy lifting, running the site silently on solar and battery power for over 70% of the time. The gensets only kick in during prolonged cloudy periods or for peak shaving, running at their optimal, efficient load.

The result? They eliminated over 85% of their planned fuel deliveries, slashing both cost and site traffic. The noise and air quality improvements were immediate, which smoothed relations with regulatory agencies. And because the entire system was in UL-certified containers, the local county electrical inspector was able to sign off based on the nameplate certifications, avoiding months of custom engineering review. When the exploratory phase ends, they can literally load these containers onto trucks and redeploy them to the next site. That's asset flexibility you can't get with poured concrete and fixed infrastructure.

The Engineer's Notebook: C-Rate, Thermal Management & Real-World LCOE

Okay, let's get a bit technical over our coffee, but I promise to keep it practical. When you evaluate a BESS for mining, three specs are non-negotiable:

- **C-Rate:** This is basically how "hard" you can push the battery. A 1C rate means you can discharge the full capacity in one hour. Mining loads have huge excavators and crushers that can cause sudden, massive power spikes. You need a battery with a high enough C-rate (like 0.5C to 1C) to handle those surges without tripping or needing the diesel to constantly ramp up. It's about responsiveness.
- **Thermal Management:** This is everything. I've opened up poorly designed systems in the Arizona desert where the heat buildup was staggering. It kills battery life and is a safety hazard. Our systems use a closed-loop, liquid-cooling system that maintains an optimal temperature range whether it's -30C or +50C outside. This isn't a luxury; it's what ensures the 10+ year lifespan and UL safety certification are real, not just paper specs.
- **Real-World LCOE:** The formula is complex, but the idea is simple: it's the total lifetime cost of your energy system divided by the total energy it produces. With solar+BESS, your "fuel" (sunlight) is free. So, the calculation revolves around the upfront cost, financing, and longevity. That's why robust thermal management and high-cycle-life battery chemistry (like LFP) are critical—they keep the denominator in that LCOE equation high for years longer. A cheap battery that dies in 5 years will give you a terrible LCOE, no matter how cheap it was upfront.

The industry is moving past the pilot project phase. The technology is proven, the standards are clear (UL, IEC, IEEE), and the financial case is overwhelming. The real question for an operations director isn't "Can we do this?" but "How quickly can we get this asset deployed and start saving?"

What's the one operational constraint in your remote power setup that keeps you up at night? Is it the next fuel delivery, the next emissions audit, or the inability to scale power up quickly for a new phase? Let's talk about how to turn that constraint into a solved problem.

Author: John Tian

5+ years agricultural energy storage engineer / Highjoule CTO

URL: <https://gusroombrokers.co.za/articles/technical-specification-of-rapid-deployment-off-grid-solar-generator-for-mining-operations-in-mauritania>

